



# Drylac®



anodized effect  
Clear | 61/00015



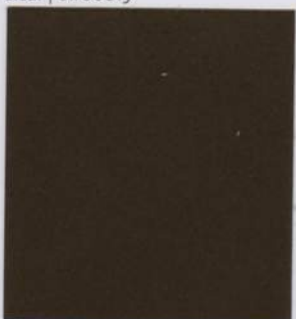
anodized effect  
Champagne | 61/78003



anodized effect  
Black | 61/80079



anodized effect  
Light Bronze | 61/78002



anodized effect  
Medium Bronze | 61/68002



anodized effect  
Dark Bronze | 61/68001



candy transparent ▲  
Black Smoke Transparent | 49/80375



candy transparent ▲  
Brass | 49/20180



candy transparent ▲  
Gold | 49/20170



candy transparent ▲  
Transparent Green | 49/55730



candy transparent ▲  
Candy Lime Green | 49/54810



candy transparent ▲  
Candy Purple | 49/41480



candy transparent ▲  
Candy Blue | 49/43600



candy transparent ▲  
Transparent Blue | 49/46110



candy transparent ▲  
Candy Teal | 49/42130



candy transparent ▲  
Copper | 49/63130



candy transparent ▲  
Candy Raspberry | 49/31570



candy transparent ▲  
Candy Red | 49/33340



candy transparent ▲  
Transparent Red | 49/35810

\* Highly Reflective clear coat applied over Bengal Black 49/88888 as basecoat. \*\* 2-coat Dormant Transparent system. Applied as basecoat and top coated with a clear glossy top coat. | Clear Glossy Polyester TGIC 49/00530 | Clear Bengal Glossy Polyester TGIC 49/01234 | Clear Glossy Polyester



reflective \*  
High Reflective Starlight | 44/00039



designer finish  
Quartzite Design Texture Matte | 44/10033



designer finish  
Lava Design Texture Matte | 44/60035



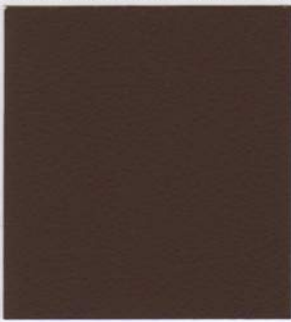
designer finish  
Breccia Design Texture Matte | 44/60034



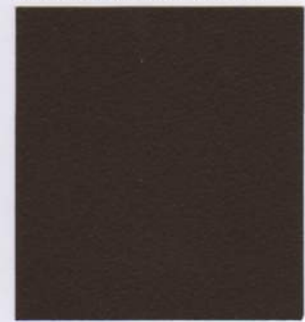
designer finish  
Graphite Design Texture Matte | 44/80026



designer finish  
Emerald Fine Texture | 49/50028



designer finish  
Rust Fine Texture | 49/62711



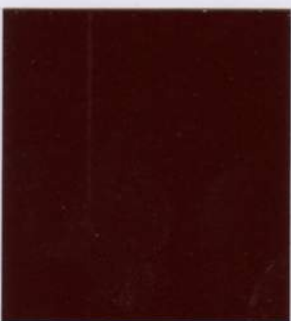
designer finish  
Pyrite Fine Texture | 49/60015



dormant transparent \*\*  
Sparkle Granny Smith | 49/50032



dormant transparent \*\*  
Sparkle Green | 49/50024



dormant transparent \*\*  
Sparkle Burgundy | 49/30193



dormant transparent \*\*  
Sparkle Sky Blue | 49/40074



dormant transparent \*\*  
Sparkle Electric Blue | 49/40233



dormant transparent \*\*  
Sparkle Blue | 49/40940



dormant transparent \*\*  
Sparkle Violet | 49/41100



dormant transparent \*\*  
Sparkle Copper | 49/25002



dormant transparent \*\*  
Sparkle New Red | 49/30028



dormant transparent \*\*  
Sparkle Bomber Orange | 49/23531



dormant transparent \*\*  
Sparkle Light Orange | 49/25006

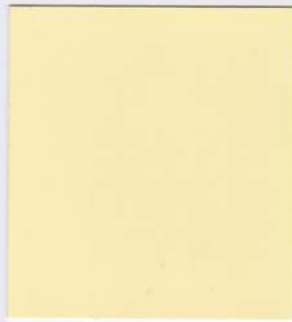
# SPECIAL EFFECTS



fluorescent ▲  
Yellow | 49/22200



fluorescent \*\*\* ▲  
Yellow | 49/21500



fluorescent ▲  
Neon Yellow | 59/20043



fluorescent ▲  
Green | 49/51340



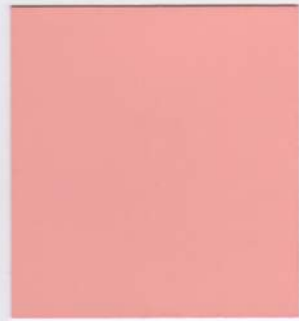
fluorescent \*\*\* ▲  
Orange | 49/24080



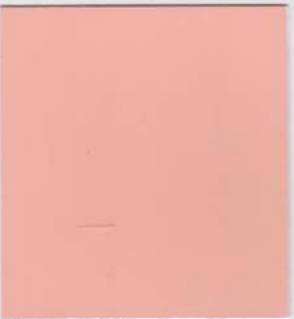
fluorescent ▲  
Orange | 49/24610



fluorescent ▲  
Red Orange | 49/24620



fluorescent \*\*\* ▲  
Red | 49/30760



fluorescent ▲  
Neon Pink | 59/30075



fluorescent \*\*\* ▲  
Bright Pink | 49/30430



hammered  
Black | 39/80005



hammered  
Jet Black | 39/81420



hammered  
Capri | 39/40750



hammered  
Sapphire | 39/40002



hammered  
Light Silver | 39/90980



hammered  
Silver | 39/90020



hammered  
Gold Brown | 39/90280



hammered  
Malachite | 39/40003



hammered  
Reseda | 39/50002



hammered  
Sepia | 39/60002

\*\*\* 2-coat Fluorescent system. Applied over a high gloss smooth White Base Coat 49/11000.

▲ Candy Transparent and Single-coat Fluorescent finishes provide limited hiding. Candy Transparent and Fluorescent finishes have limited UV stability.